

INVERTER REPLACEMENT MANUAL

LINKIT[®] Series LKS300/LKS450 Portable Conveyor



DISTRIBUTED BY:

InterQuip USA LLC

☎ 203.322.2600

🌐 interquip.net

SAFETY

LINKIT® LKS300/LKS450 Series Portable Conveyor



DANGER

Failure to obey the instructions and safety rules in this manual will result in death or serious injury.

Before undertaking any electrical or mechanical work, ensure the power to the machine is disconnected.



STEP 1

Retract the bottom belt tensioner all the way to its resting position.



STEP 2

Release and retract the cam adjusters at the head of machine.



STEP 3

Pull belt over to the right hand side of the conveyor. Wedge a small piece of wood between the belt and frame to ease access to the control box.



STEP 4

This can be done by one man if you have a clamp.



STEP 5

Remove emergency stop circuit via male/female red connectors.



STEP 6

Remove 110v power input and 3ph output terminals.



STEP 7

Cut red male terminals off the emergency stop circuit loom.



STEP 8

Remove wood and clamp to relax the belt tension. Push the belt towards the base of machine to create a gap to remove control box.



STEP 9

Remove 110v input and orange 3ph output from the glands in existing control box. **DO NOT CUT CABLES.**



STEP 10

Remove 6mm bolts from front of control box.



STEP 11

Remove long 8mm bolt attaching the box to the frame rung.



STEP 12

Push box towards the base of machine and slide out the left hand side, directly below its original position.



STEP 13

Insert the new control box using the same process as the removal of old box.



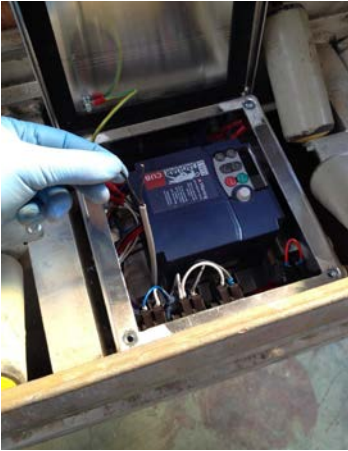
STEP 14

Reattach the 6mm bolts to front of control box. This is easiest if you prop the rear of the box up with one hand.



STEP 15

Reattach the long 8mm bolt fixing the rear of the control box.



STEP 16

New control box is now installed. Remove control box lid and push emergency stop cable through.



STEP 17

Push 110v input and orange 3ph cables into the two large glands. Do this from the underside of machine.



STEP 18

Tighten glands to seal cables to IP68.



STEP 19

Pull belt back over to one side. Cut and strip the ends of the 110v input cable. Twist and crimp the red male connectors.



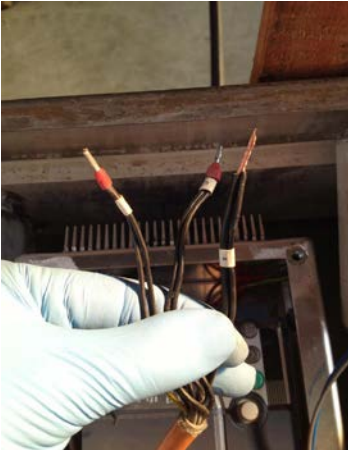
STEP 20

Attach the 110v input cable to the matching HOT, NEUTRAL and GROUND on the power input loom. This runs down the left hand side of the inverter.



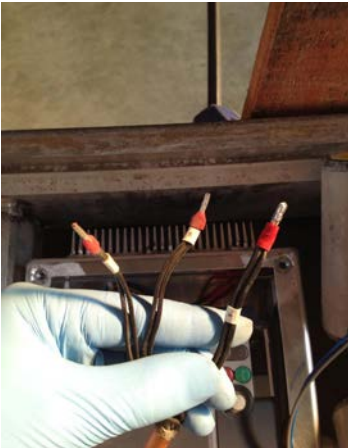
STEP 21

Move the Emergency stop loom away from the left hand side of the inverter. (Blue, grey and black pictured). Then route the 110v input cable behind the inverter and round the left hand side.



STEP 22

Cut the existing red terminals off the orange 3ph motor supply cable and connect the new male red connectors supplied. **DO ONE PAIR AT A TIME.**



STEP 23

Ensure there is no bare wire visible when the two cables are crimped onto connector.



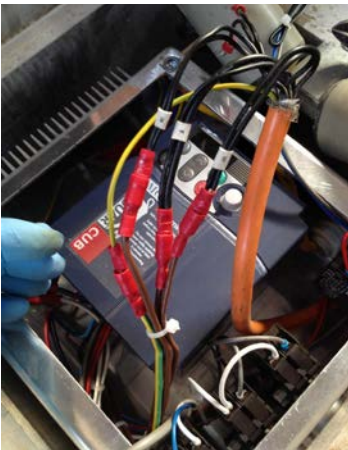
STEP 24

Finished 3ph cable should look like the picture opposite. The other two black cables are the thermal cut out for the drum motor.



STEP 25

Strip existing emergency stop cable and attach male terminals supplied.



STEP 26

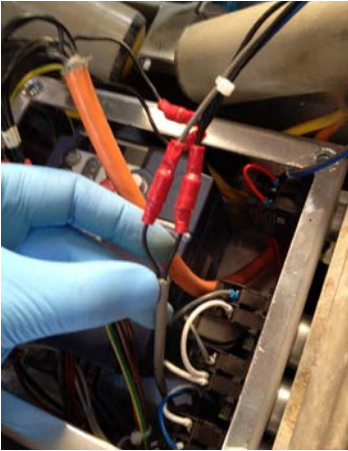
Connect the paired 3ph cables to the 3ph output loom. The loom consists of 3 HOT cables and a GROUND. At this point it doesn't matter what way round the 3 phases go.



STEP 27

Attach the thermal cut out cables to the emergency stop loom (grey, blue and black loom).

Connect to the blue and black terminals.



STEP 28

Connect the emergency stop circuit to the emergency stop loom (grey blue and black loom).

Connect to the grey and black terminals.



STEP 29

Route the remaining cables beside the right hand of the inverter.



STEP 30

Place lid onto control box. Remove belt clamp. Put 110v power into machine. Test the forward and reverse functions. **If the directions are reversed, remove power. Wait 30 seconds for inverter to power down. Then swap over any two of the 3ph supply cables and re-test.**



STEP 31

Once completed, replace lid and tighten down using 6mm bolts and sealant washers provided. Re-tension belt via base adjuster and cam tensioners.

REMINDER

LINKIT® LKS300/LKS450 Series Portable Conveyor

CONGRATULATIONS! You've successfully replaced the inverter on your LINKIT® LKS300/LKS450 Series Portable Conveyor. Be sure to review your Operator's Manual and follow the safety and operation instructions before each use.


For sales, parts and service, contact InterQuip.

DISTRIBUTED BY:

InterQuip USA LLC

 203.322.2600

LINKIT
conveyors 

 interquip.net